

# THE BERKELEY LIFE



BEYOND  
IMAGINATION

Lose yourself in the elegance  
of graceful living.

SO  
HO





# IN THE HEART OF DUBAI HILLS ESTATE

Thrive in the centre of it all with The Berkeley. It introduces you to a lifestyle where the essence of sophistication intertwines seamlessly with the allure of park life.

Picture yourself living in a fully considered space that opens up to reveal panoramic views of lush greenery, creating an oasis within the bustling cityscape. The Berkeley is an invitation to indulge in the serenity and rejuvenating ambience of the park, offering a retreat from the urban pulse.





Recognizing the role of green spaces in achieving balance, The Berkeley taps into the psychology of this connection, going beyond aesthetics and into a space of wellness, rejuvenation and balance.

The Berkeley is an extension of Dubai Hills Park. A living, breathing amenity that extends the lifestyle on offer, inviting you to experience a gracious blend of sophistication and nature.

## EMBRACE PARK LIFE

By embracing the essence of park life, The Berkeley is built on our profound connection with nature. Think Central Park. Think Hyde Park, or Regents Park. This emotional and profound association serves as the fabric of life at The Berkeley.







# INTENTIONAL CONVENIENCE

From the green expanse, footsteps away,  
The Berkeley conveniently connects you to  
world-class amenities and leisure.



Prime Location in  
Dubai Hills Estate



Dubai Hills Mall



Dubai Hills Park



Dubai Hills Golf Club









# CAREFULLY CURATED, FULLY FURNISHED



Beyond integrating park life, The Berkeley represents the first fully-furnished curated space in Dubai Hills Estate. This is an invitation to a life that's uncompromised.



The Berkeley is an example of our belief in the power of design to elevate spaces to a place of artistry. Together with leading architects and designers, we've thoughtfully composed the interiors to maximize the feeling of balance and rejuvenation.

By making design minded choices, living spaces are curated to enhance look and use, while state-of-the-art appliances and best-in-class finishes are fitted throughout to improve every aspect of the everyday.





# TIMELESS CRAFTSMANSHIP

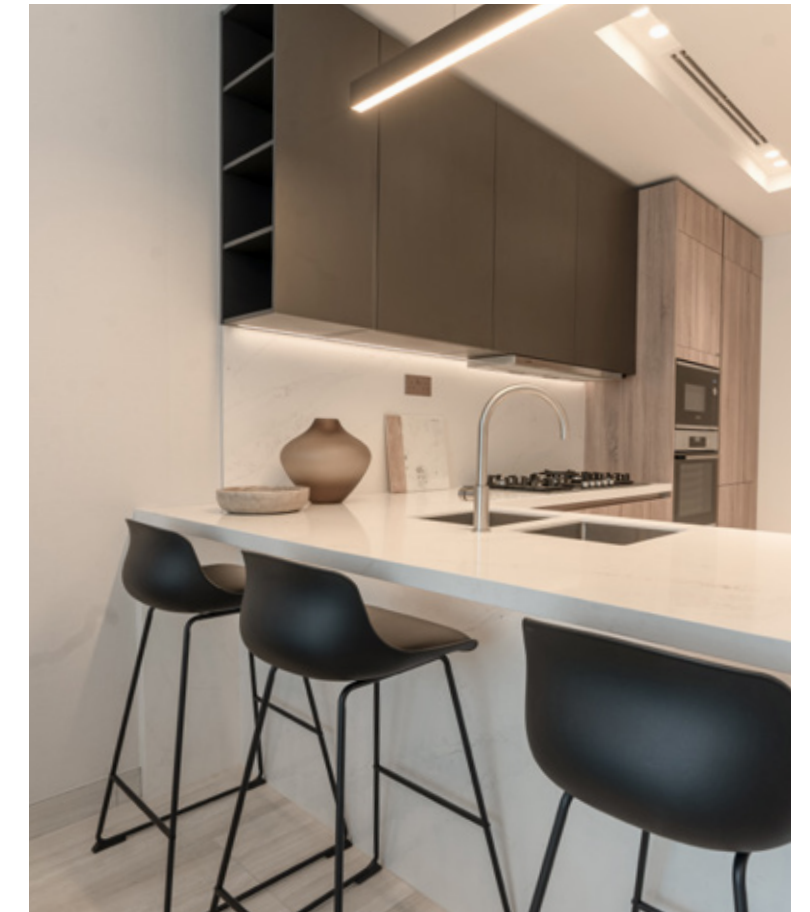


The Berkeley is a testament to making design-led choices. Within it, design is used to connect and celebrate timelessness.

- Renowned opening systems from Blum & Salice in Austria
- Master woodwork from EGGER in Germany
- Contemporary wardrobes from Pianca & bespoke kitchen cabinetry from Snaidero in Italy
- Finely crafted fixtures from Bagno Design in Italy
- Bespoke finishings from Ilavio in Greece
- Precision German appliances from Bosch















At the heart of it, The Berkeley is reimagined Hotel Inspired Living.

It's where the comfort and attentiveness of a luxurious hotel meets the contentment of home.

With an always-available Director of Residences, our sole focus is to provide all residents with an extraordinary sense of security, comfort and discretion.

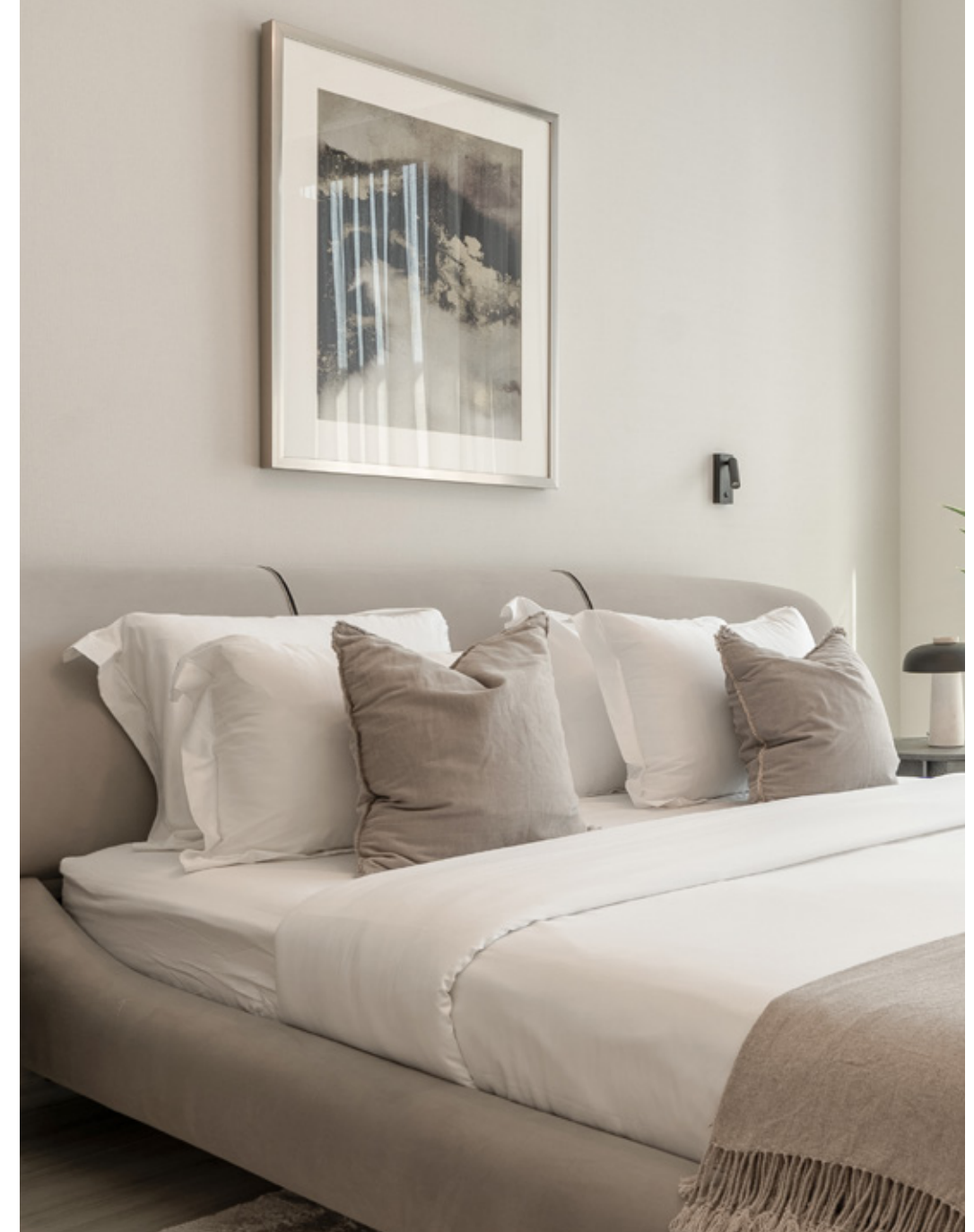
# HOTEL INSPIRED LIVING



A space where you prioritize service, relaxation and indulgence, drawing on the finest elements of hospitality. It can be found in the touch of high-quality accents. In the warmth of inviting furnishings and soft lighting.

In the serenity of calm palettes, natural textures and greenery. When combined, these elements create an unrivalled sense of tranquility and relaxation that you can live in.









The Berkeley goes beyond the borders of conventional residential life.

# EVERYTHING YOU COULD EVER NEED



It's a uniquely sophisticated space where every aspect is enriched and enhanced through curation and world-class finish.

## THE LOUNGE

The epitome of comfortable living. A bright and light-filled space to unwind and connect.





#### THE AZURE POOL

A sparkling escape, surrounded by a lush green landscape. Whether it's to cool off or soak up, indulge in the art of leisure and relaxation.

#### THE SUN DECK

Where rest and connection come together, offering a space to enjoy the sun, a refreshing drink, and breathtaking views.











### THE PLAYHOUSE

Family beside fun. Crafted as a safe and nurturing environment where children can explore and let their imaginations soar.







#### THE WELLNESS STUDIO

The perfect retreat fitted with state-of-the-art equipment. The ideal backdrop to find your perfect physical and mental balance.

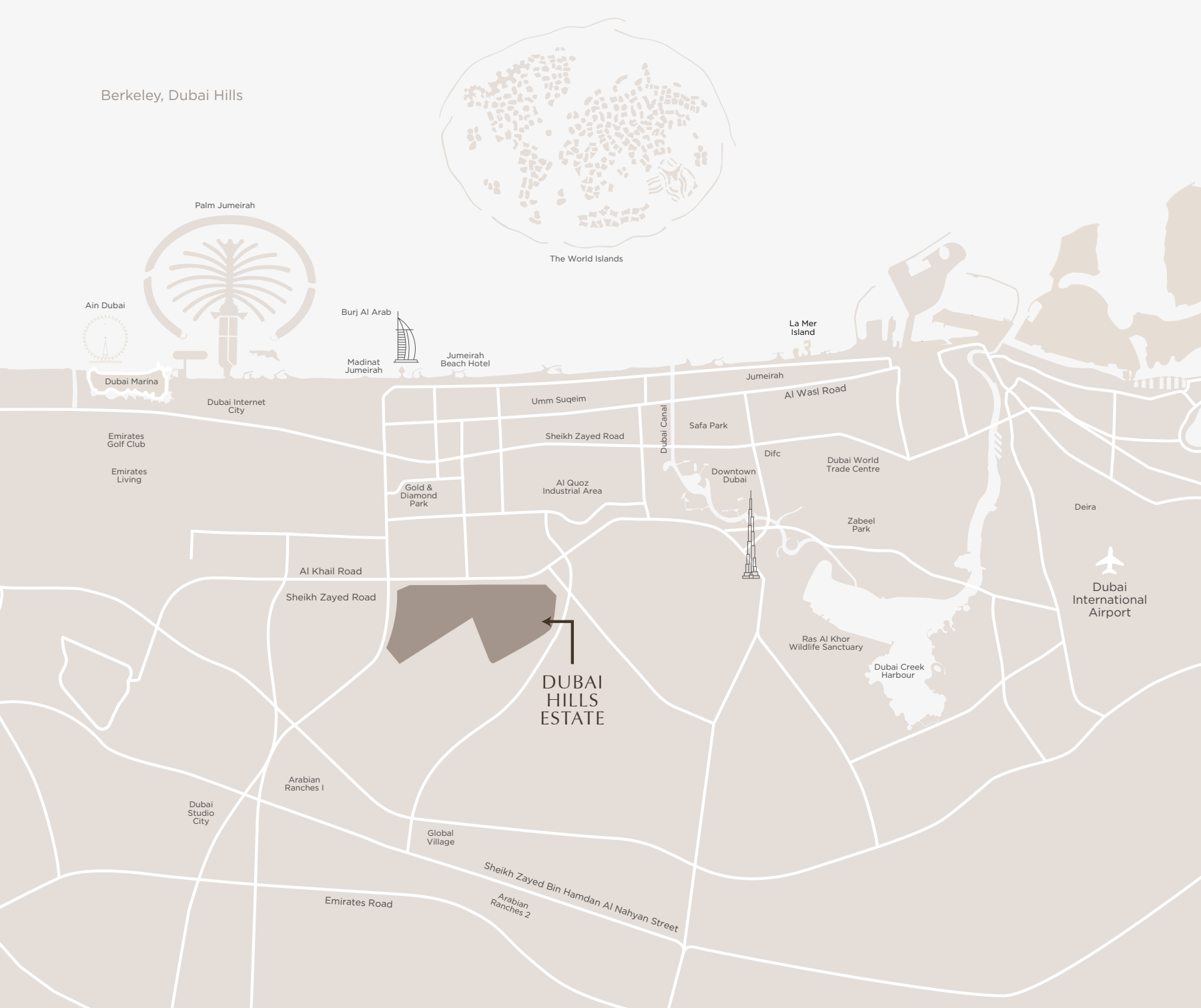




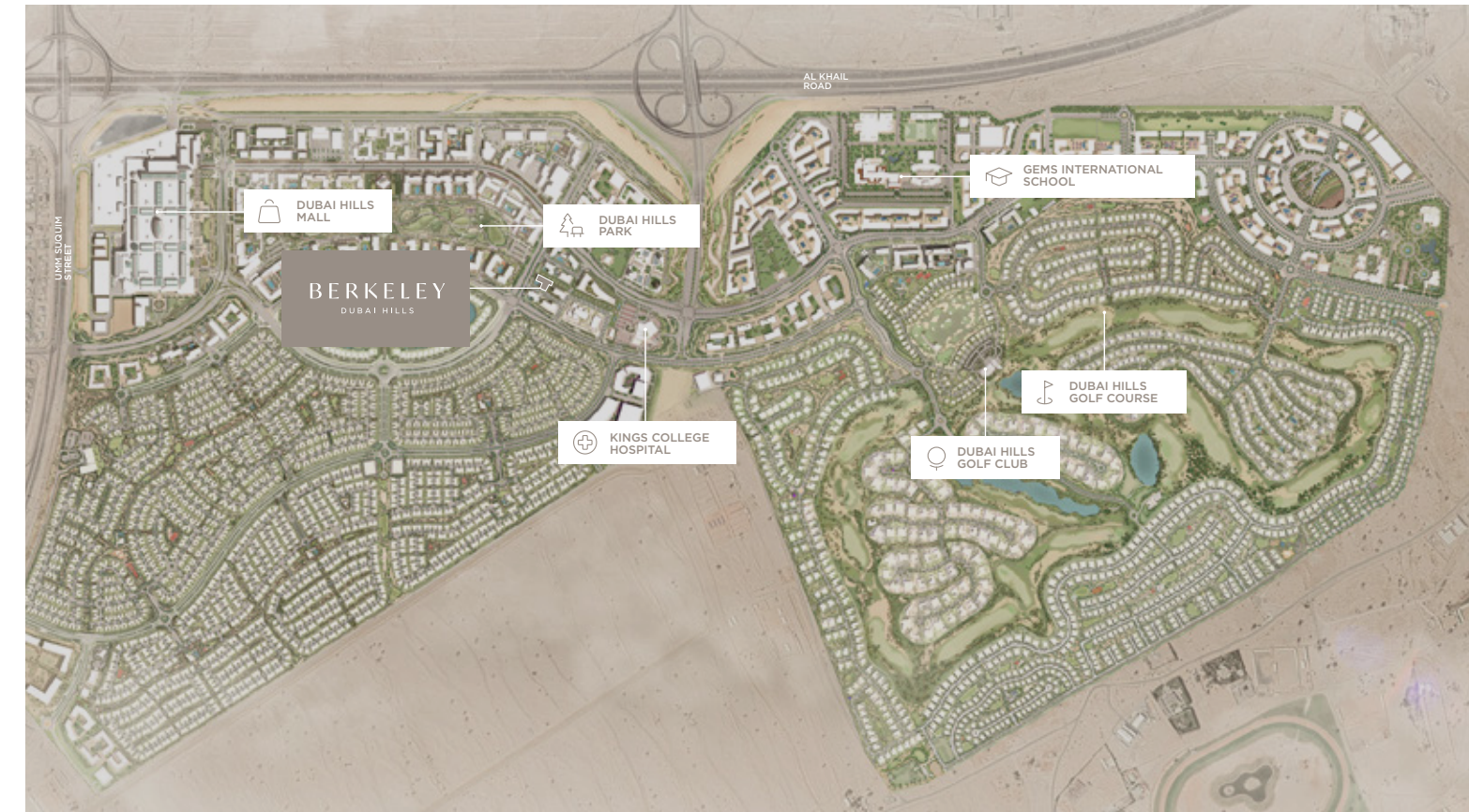
#### THE REFLECTION GARDEN

Stroll through the green path and seek out a secluded spot for a tranquil moment.





# EVERYTHING AT YOUR DOORSTEP



15

minutes from Downtown Dubai

15

minutes from Dubai Marina

20

minutes from Dubai International Airports

25

minutes from Expo City

The Berkeley is strategically positioned, yet distant from the city's hustle. Al Khail Road, Downtown Dubai and major hubs are minutes away and soon, Etihad Rail and Dubai Metro will offer swift airport and emirate connections.



# CRAFTED TO SUBTLE ELEGANCE, BY SOHO DEVELOPMENT

At the heart of The Berkeley lies the imaginative touch of Soho Development.

A team dedicated to delivering a way of living that encompasses the philosophy of understated luxury. Soho Development creates spaces that serve as sanctuaries for reconnection, unwinding, introspection and rejuvenation.

Soho Development is the sum of their beliefs:

“

*Design has the power to elevate and impact human existence. Quality and experience are the cornerstones of every space. Nothing should be typical. And nothing is a substitute for thought, care and the trust it earns.*

”

Sahil Khosla, CEO & Creative Director



Soho Development is a commitment to a uniquely refined way of living. It's equally a vision, an aspiration and a commitment to redefining that very way of life. We are visionaries with intent, who carefully curate experiences at the intersection of design, minimalist luxury and sophistication.

SO  
HO





ELEVATING THROUGH PARTNERSHIP

We recognize the power of collaboration and partnership in improving the design and feel of a space. As a collection with a unique understanding and discernment, we remain open to partnering with brands who share our vision to deliver curated living.

Architecture & Design by:









Beyond Imagination,  
at The Berkeley.

## CONTACT

800DEVMARK  
[www.sohodevelopment.com](http://www.sohodevelopment.com)

Developed by:

SO  
HO

Exclusive Sales & Marketing by:

DEVMARK

Disclaimer:

Any images and visualizations contained herein are provided for illustrative and marketing purposes only. All information contained herein is subject to change without notice and without liability and only the information contained in the final Sales and Purchase Agreement entered into between the Seller and Buyer will have any legal effect. E&OE.





# BERKELEY

DUBAI HILLS



**Avla**  
real estate

Accredited Real Estate Agency

SO  
HO